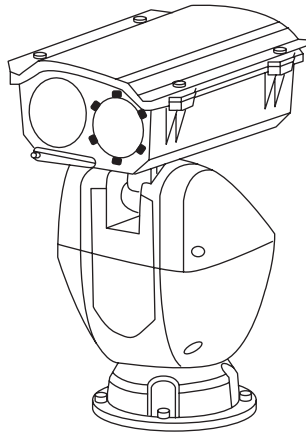




ICI

INFRARED CAMERAS INC

DETECTIR PTZ 640 QUICK START GUIDE



ICI cameras fall under US Federal Law and Export Control.

2105 W. Cardinal Dr. Beaumont, TX 77705
Phone: (409) 861-0788
Toll Free: (866) 861-0788
infraredcameras.com
support@infraredcameras.com
We Are IR™

©Copyright 2024, Infrared Cameras, Inc. - All rights reserved. The contents of this document may not be reproduced in whole or in parts without the written consent of the copyright owner.

Printed in the United States of America.

2105 W. Cardinal Dr.
Beaumont, TX 77705
(866) 861-0788
www.infraredcameras.com

Revision: 07.2024-001

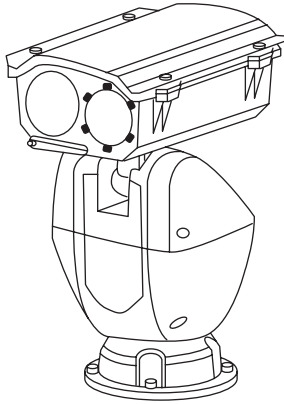
THE MANUFACTURER RESERVES THE RIGHT TO ALTER THE SPECIFICATIONS OF THE PRODUCT WITHOUT PRIOR NOTIFICATION. THE MANUFACTURER ALLOWS HIMSELF THE RIGHT TO MODIFY WITHOUT ANY PRELIMINARY OPINION THE TECHNICAL SPECIFICATIONS OF THE PRODUCT. THIS MANUAL MAY CONTAIN TECHNICAL INACCURACIES OR TYPOGRAPHICAL ERRORS.

NOTICE ALL STATEMENTS, INFORMATION, AND RECOMMENDATIONS IN THIS MANUAL ARE BELIEVED TO BE ACCURATE BUT ARE PRESENTED WITHOUT WARRANTY OF ANY KIND. NOTWITHSTANDING ANY OTHER WARRANTY HEREIN, ALL DOCUMENT FILES AND SOFTWARE ARE PROVIDED "AS IS" WITH ALL FAULTS. ICI DISCLAIMS ALL WARRANTIES, EXPRESSED OR IMPLIED, INCLUDING, WITHOUT LIMITATION, THOSE OF MERCHANTABILITY, FITNESS FOR A PARTICULAR PURPOSE AND NON-INFRINGEMENT OR ARISING FROM A COURSE OF DEALING, USAGE, OR TRADE PRACTICE.

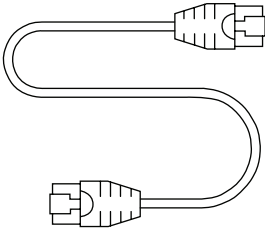
THE SOFTWARE LICENSE AND LIMITED WARRANTY FOR THE ACCOMPANYING PRODUCT ARE SET FORTH IN THE INFORMATION PACKET THAT SHIPPED WITH THE PRODUCT AND ARE INCORPORATED HEREIN BY THIS REFERENCE. IF YOU ARE UNABLE TO LOCATE THE SOFTWARE LICENSE OR LIMITED WARRANTY, CONTACT YOUR ICI REPRESENTATIVE FOR A COPY.

IN NO EVENT SHALL ICI BE LIABLE FOR ANY INDIRECT, SPECIAL, CONSEQUENTIAL, OR INCIDENTAL DAMAGES, INCLUDING, WITHOUT LIMITATION, LOST PROFITS OR LOSS OR DAMAGE TO DATA ARISING OUT OF THE USE OR INABILITY TO USE THIS MANUAL, EVEN IF ICI HAS BEEN ADVISED OF THE POSSIBILITY OF SUCH DAMAGES.

Package Includes



DetectIR PTZ 640 device



Ethernet Cable



Waterproofing Kit



Software USB Drive

ENSURE ALL SYSTEM EQUIPMENT AND COMPONENT ITEMS ARE PRESENT BEFORE CONTINUING.

Tools

- Electric drill
- Expansion bolts
- Securing cables or straps

ON PERSONAL INSTALLS, THE COMPANY PROVIDES ALL THE TOOLS AND EQUIPMENT REQUIRED TO SUCCESSFULLY COMPLETE THE INSTALLATION.

PROFESSIONAL INSTALLATION IS RECOMMENDED.

THE PTZ IS HEAVY, SO YOU MUST CHECK WHETHER THE PTZ CAN BE POWERED ON AND THE SELF-CHECK AND PTZ CONTROL IS NORMAL OR NOT. START INSTALLING AFTER ALL THE TESTS ARE NORMAL.

MOUNTING GUIDES VARY BY BRACKET. DO NOT DRILL HOLES BEFORE RECEIVING THE PACKAGE.

PPE Requirements

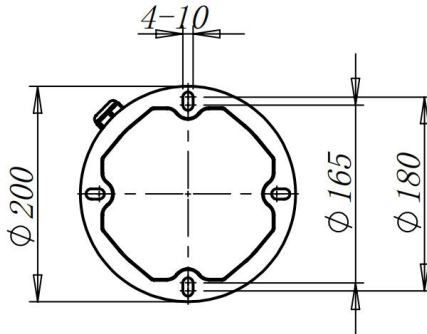
- Safety glasses
- Working gloves (recommended)
- Comply with all site PPE requirements

ENSURE THE INSTALLATION COMPLIES WITH SITE SAFETY AND PPE REQUIREMENTS. SAFETY GLASSES SHOULD BE WORN AT ALL TIMES. GLOVES ARE HIGHLY RECOMMENDED.

Set Up

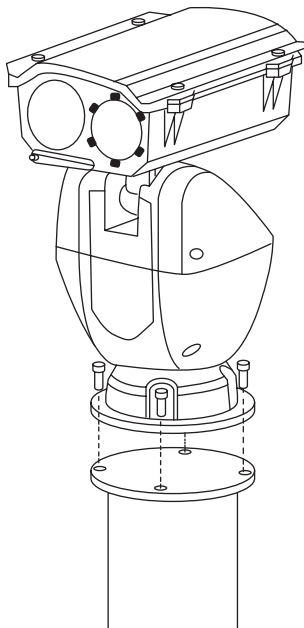
A.

Drill four mounting holes on the mounting surface according to the diagram.



B.

Affix the PTZ device to the bracket using the mounting screws.



C.

Wire the PTZ device according to the pigtail cable diagram.

P1 Power AC 24V

P2 Ground

P3 Network (LAN)

P4 RS-485

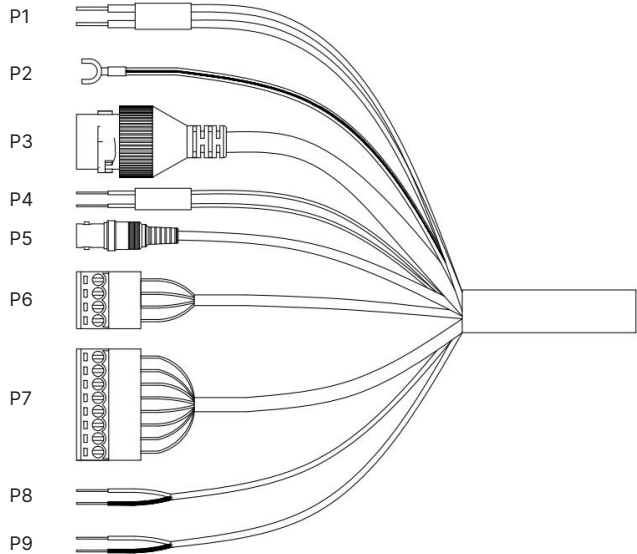
P5 Video (BNC)

P6 Alarm out (ALARM OUT)

P7 Alarm in (ALARM IN)

P8 Audio out (AUDIO OUT)

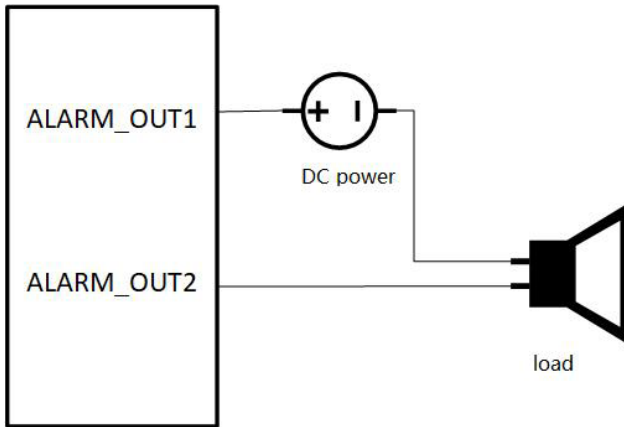
P9 Audio in (AUDIO IN)



PIGTAIL CABLES VARY BASED ON THE PRODUCT MODEL.

D.

The camera can be connected with an alarm signal (0 ~ DC5V) input and switch output (no voltage).



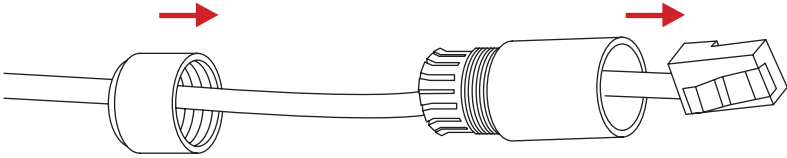
AN EXTERNAL POWER SUPPLY IS REQUIRED WHEN CONNECTING THE ALARM APPARATUS.

E.

Use the waterproof tape to tightly wrap the wiring terminal and nearby cables. Continue wrapping until the wiring terminal and surrounding cables are fully covered with the waterproof tape.

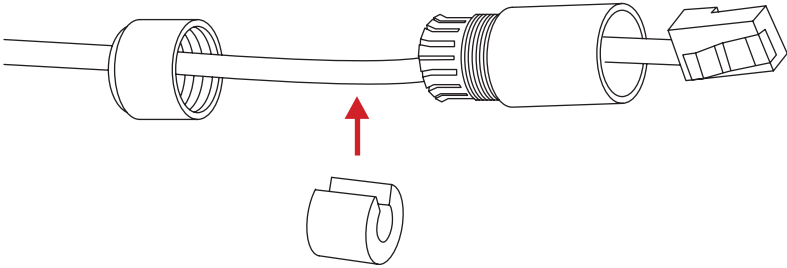
F.

Thread the network cable through the fastening nut and then through the main body of the waterproof cover.



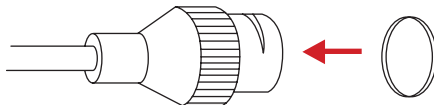
G.

Break the waterproof rubber ring and place it on the network cable between the main body of the waterproof cover and the fastening nut.



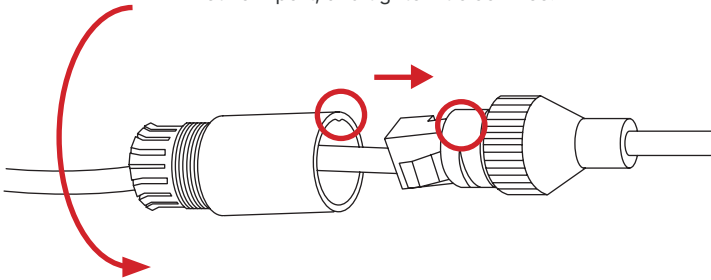
H.

Insert the O-shaped rubber ring into the network port, then insert the network cable into the network port.



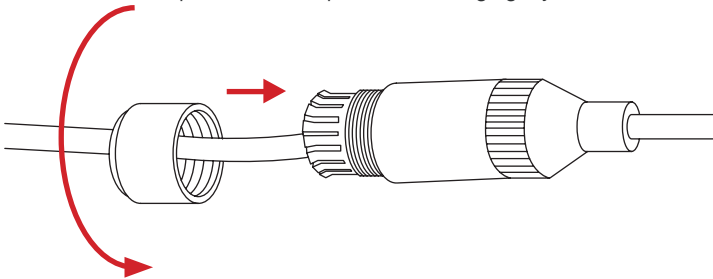
I.

Align the notch of the network port with the buckle of the main body of the waterproof cover, put the main body of the waterproof cover into the end of the network port, and tighten it clockwise.



J.

Insert the waterproof rubber ring into the main body of the waterproof cover; then, turn the fastening nut clockwise and press the waterproof rubber ring tightly.



K.

After installation, apply anti-corrosion paint to all fixed screws and nuts until it overflows, ensuring that the screw heads are completely covered.

Software

Software arrives installed on computers and tablets purchased from ICI as complete systems and it will launch automatically on startup. A copy of the software is provided on the Software USB Drive. Documentation can be found online on the IR Flash Pro web page under the Downloads section or at this address:

<https://infraredcameras.com/ir-flash-pro-manual/>

Recommended System Requirements

- **Processor:** i5 Quad Core or above
- **RAM:** 4 GB or above
- **OS:** Windows 8/8.1/10
- **Hard Drive:** 256 GB or above
- **Resolution:** 1920 x 1080

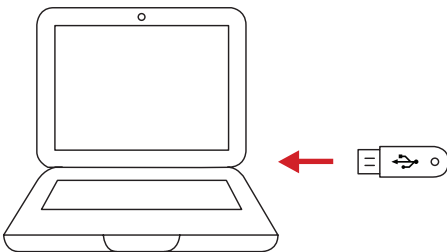
Use the following steps if installing IR Flash Pro on a user computer:

A.

Install IR Flash software using the software USB drive. Refer to the IR Flash User Manual for instructions.

B.

Once installed, launch IR Flash software by double-clicking the associated desktop icon.



About ICI / Contact

Infrared Cameras, Inc.
2105 W. Cardinal Dr.
Beaumont, TX 77705

Phone: (409) 861-0788 | Toll Free: (866) 861-0788 | International: (409) 861-0788

General Inquiry: support@infraredcameras.com

Website: www.infraredcameras.com

You may reach a representative by phone or email Mon – Fri 8:00AM – 5:00PM CST.

ICI manufactures complete systems and software. We can provide complete engineering, software, and OEM solutions. Our Fortune 500 clients rely on us for infrared equipment and thermography training (which we offer through the Infrared Training Institute).

In addition to providing custom germanium, silica, and sapphire optics, we also build windows for enclosures, as well as custom pan and tilt units. We can even provide customizable explosion-proof systems.

Our knowledge and experience stems from years of using infrared imaging and temperature measurement instruments to provide solutions to: managers, engineers, scientists, inspectors and operators in space, power companies, medical, pulp and paper, food industry, research and development, and various process industries. You can see our products and services used in industrial, commercial, and government applications worldwide. Originally named Texas Infrared (still DBA), Infrared Cameras, Inc. has been in business since March, 1995.

Thank you for your dedicated and continued support.