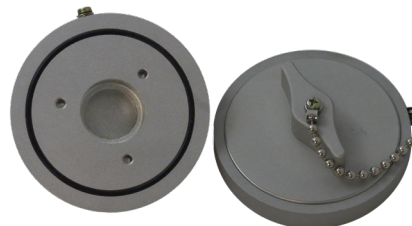


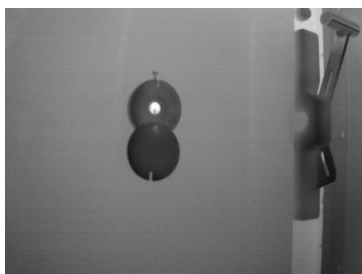
# SAFER CABINET MONITORING

## SEE THROUGH PANEL COVERS

Our fixed mounted protection port windows are designed to provide safer inspection capabilities without opening electrical cabinets. The aerospace/marine grade anodized aluminum accessories have been utilized to monitor electrical equipment and connections under load. Perfect for finding and locating critical failures as well as abnormal temperatures without removing panel covers.

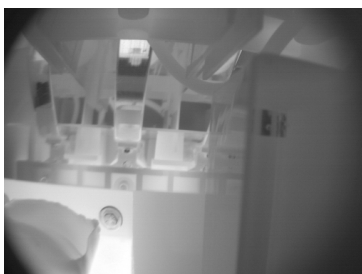


**Arc Protection Port Window**  
Available with or without Germanium lenses



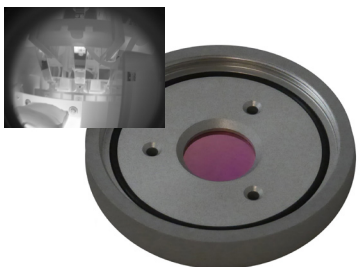
## ENVIRONMENTALLY PROTECTED

Our heavy duty protection ports can be installed on indoor or outdoor electrical cabinets. They are rated to protect against dirt, dust, and other particulates. The threaded cover features an O-ring for a secure seal against the elements. A heavy duty chain holds the cover during inspection to prevent loss of property.



## RUGGED AND EXPLOSION RESISTANT

The cover of the protection port is threaded for impact and explosion resistance. A large wing is attached for easy port cover removal with no slipping. Constructed of durable anodized aluminum for durability. ANSI C37.20.7 and IEC 62271 compliant. This provides for a safe work environment and faster inspections.



## GERMANIUM LENSES AVAILABLE

Decrease cabinet exposure with an anti-reflective coated and corrosion resistant Germanium lens. Infrared cameras can see through the glass with ease giving you a clear view beyond electrical panels while staying safe. These lenses are ideal for harsh environments and applications where there is constant exposure to the elements.



NFPA 70E and safety for thermographers is of primary importance to all companies. ICI has designed and developed an Arc Protection Port which gives a thermographer the ability to inspect electrical equipment under load without removing the panel cover. This provides for a safe work environment and faster inspections. With a one-time installation to an electrical panel and with regular infrared surveys the AP Port can give employees more confidence in equipment while giving an inspection team the ability to survey equipment in a timely manner. AP Ports are available in two options, 1" open window, 1" closed germanium window. AP Ports can be used with any infrared camera on the market.

## Benefits

- One-time installation
- UL Recognized
- AP Port is O ring sealed
- Cabinets remained sealed
- Perform inspections on equipment under load
- Threaded cover for impact and explosion resistance
- Faster electrical equipment inspections
- Provides confidence in equipment
- Usable with any infrared camera
- Usable on both indoor and outdoor equipment
- Large wing for easy port cover removal: no slipping
- Rugged anodized aluminum construction
- Heavy duty chain holds during inspection
- Port lip rest to keep camera steady and simplify inspections

## Specifications

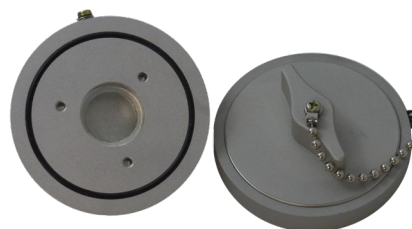
- **Diameter:**
  - Inner: 76.2 mm  $\pm$  0.5 mm (3"  $\pm$  0.02")
  - Overall: 88.9 mm  $\pm$  0.5 mm (3.5"  $\pm$  0.02")
- **Thickness:** 9.53 mm  $\pm$  0.5 mm (3/8"  $\pm$  0.02")
- **Port Opening:** 25.4 mm  $\pm$  0.5 mm (1"  $\pm$  0.02")
- **Protection:** IP65
- **Material:** aerospace/marine grade anodized aluminum
- **Compliance:** ANSI C37.20.7 and IEC 62271

## Applications

- Loaded electrical equipment inspections
- Electrical cabinet inspections
- Indoor/outdoor applications

## Options

- Optional: Germanium windows



Arc Protection Port Window  
Available with or without Germanium lenses