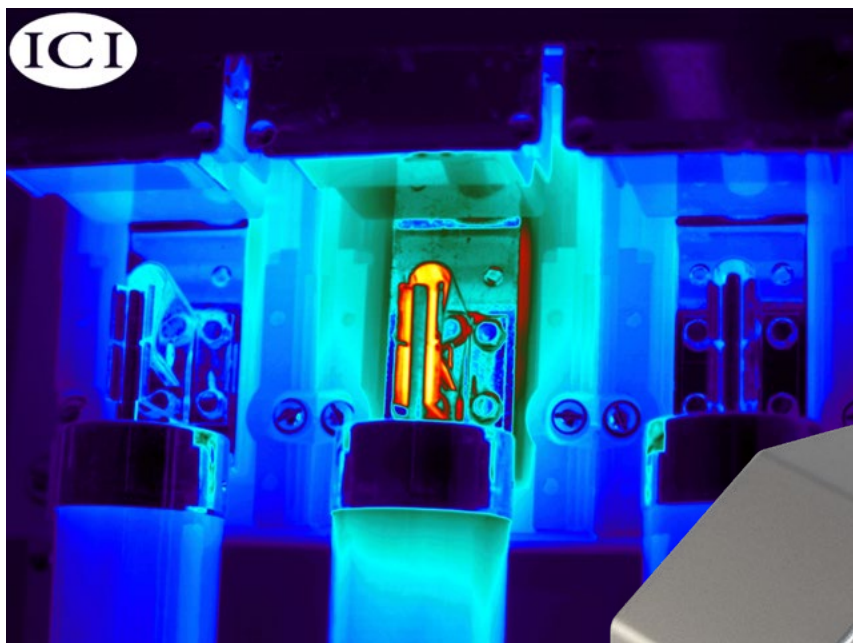


ICI | Mirage 640 Quick Start Guide



www.infraredcamerasinc.com | sales@infraredcamerasinc.com

INFRARED CAMERAS INC.
2105 W. Cardinal Dr.
Beaumont, TX 77705

Phone: (409) 861-0788
Toll Free: (866) 861-0788

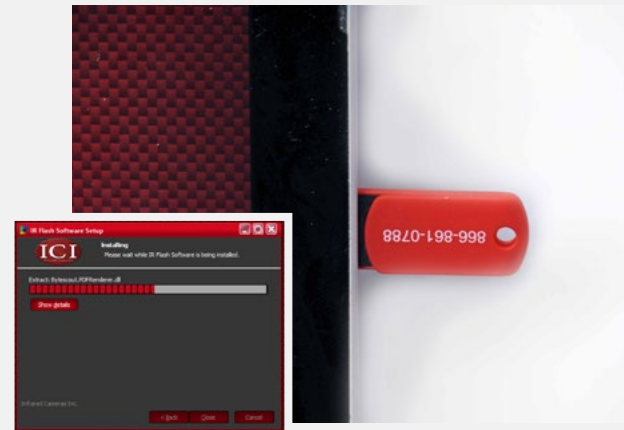
We are IR™

PACKAGE INCLUDES

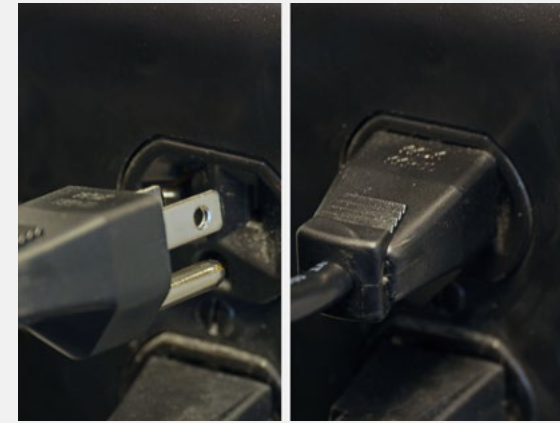
- A. AC/DC Wall Adapter
- B. Power Cord
- C. ICI Mirage 640 Infrared Camera
- D. Mini USB to USB Connector (Type A) Cord
- E. IR Flash Software USB Drive



- 1** Install IR Flash Software using the USB Drive. Refer to your IR Flash Software User Guide for instructions.



- 6** Launch your version of the IR Flash Software from the desktop. Enjoy your purchase.



- 7** Launch your version of the IR Flash Software from the desktop. Enjoy your purchase.



- 2** Plug the Power Cord into the AC/DC Wall Adapter.



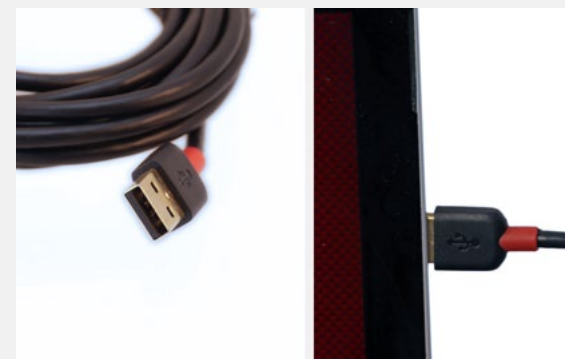
- 3** Plug the DC Connector into the DC Connector Port on the back of the Mirage 640 Infrared Camera.



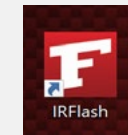
- 4** Plug the Mini USB Connector into the Mini USB Port on the back of the Mirage 640 Infrared Camera.



- 5** Plug the USB Connector into the USB Port on your computer. Fits standard-size Type A (12mm) ports.



IR FLASH SOFTWARE VERSIONS



IR Flash Software Version 1.0



IR Flash Pro

©Copyright 1995, Infrared Cameras, Inc. - All rights reserved.
2105 W. Cardinal Dr.
Beaumont, TX 777
866.861.0788
www.infraredcamerasinc.com

All rights reserved. The contents of this document may not be reproduced in whole or in parts without the written consent of the copyright owner.

NOTICE ALL STATEMENTS, INFORMATION, AND RECOMMENDATIONS IN THIS MANUAL ARE BELIEVED TO BE ACCURATE BUT ARE PRESENTED WITHOUT WARRANTY OF ANY KIND. NOTWITHSTANDING ANY OTHER WARRANTY HEREIN, ALL DOCUMENT FILES AND SOFTWARE ARE PROVIDED "AS IS" WITH ALL FAULTS. ICI DISCLAIMS ALL WARRANTIES, EXPRESSED OR IMPLIED, INCLUDING, WITHOUT LIMITATION, THOSE OF MERCHANTABILITY, FITNESS FOR A PARTICULAR PURPOSE AND NONINFRINGEMENT OR ARISING FROM A COURSE OF DEALING, USAGE, OR TRADE PRACTICE.

THE SOFTWARE LICENSE AND LIMITED WARRANTY FOR THE ACCOMPANYING PRODUCT ARE SET FORTH IN THE INFORMATION PACKET THAT SHIPPED WITH THE PRODUCT AND ARE INCORPORATED HEREIN BY THIS REFERENCE. IF YOU ARE UNABLE TO LOCATE THE SOFTWARE LICENSE OR LIMITED WARRANTY, CONTACT YOUR ICI REPRESENTATIVE FOR A COPY.

IN NO EVENT SHALL ICI BE LIABLE FOR ANY INDIRECT, SPECIAL, CONSEQUENTIAL, OR INCIDENTAL DAMAGES, INCLUDING, WITHOUT LIMITATION, LOST PROFITS OR LOSS OR DAMAGE TO DATA ARISING OUT OF THE USE OR INABILITY TO USE THIS MANUAL, EVEN IF ICI HAS BEEN ADVISED OF THE POSSIBILITY OF SUCH DAMAGES.