



ICI

INFRARED CAMERAS INC

SKIN TEMPERATURE MONITOR SOFTWARE FOR IR CAMERA SYSTEMS

2105 W. Cardinal Dr. Beaumont, TX 77705

Phone: (409) 861-0788

Toll Free: (866) 861-0788

infraredcamerasinc.com

support@infraredcamerasinc.com

We Are IR™

**THIS SOFTWARE IS INTENDED TO BE USED ADJUNCTIVELY
NOT AS A STANDALONE SOFTWARE**

©Copyright 2020, Infrared Cameras, Inc. - All rights reserved.

2105 W. Cardinal Dr.
Beaumont, TX 77705
(866) 861-0788
www.infraredcameras.com

All rights reserved. The contents of this document may not be reproduced in whole or in parts without the written consent of the copyright owner.

NOTICE ALL STATEMENTS, INFORMATION, AND RECOMMENDATIONS IN THIS MANUAL ARE BELIEVED TO BE ACCURATE BUT ARE PRESENTED WITHOUT WARRANTY OF ANY KIND. NOTWITHSTANDING ANY OTHER WARRANTY HEREIN, ALL DOCUMENT FILES AND SOFTWARE ARE PROVIDED "AS IS" WITH ALL FAULTS. ICI DISCLAIMS ALL WARRANTIES, EXPRESSED OR IMPLIED, INCLUDING, WITHOUT LIMITATION, THOSE OF MERCHANTABILITY, FITNESS FOR A PARTICULAR PURPOSE AND NONINFRINGEMENT OR ARISING FROM A COURSE OF DEALING, USAGE, OR TRADE PRACTICE.

THE SOFTWARE LICENSE AND LIMITED WARRANTY FOR THE ACCOMPANYING PRODUCT ARE SET FORTH IN THE INFORMATION PACKET THAT SHIPPED WITH THE PRODUCT AND ARE INCORPORATED HEREIN BY THIS REFERENCE. IF YOU ARE UNABLE TO LOCATE THE SOFTWARE LICENSE OR LIMITED WARRANTY, CONTACT YOUR ICI REPRESENTATIVE FOR A COPY.

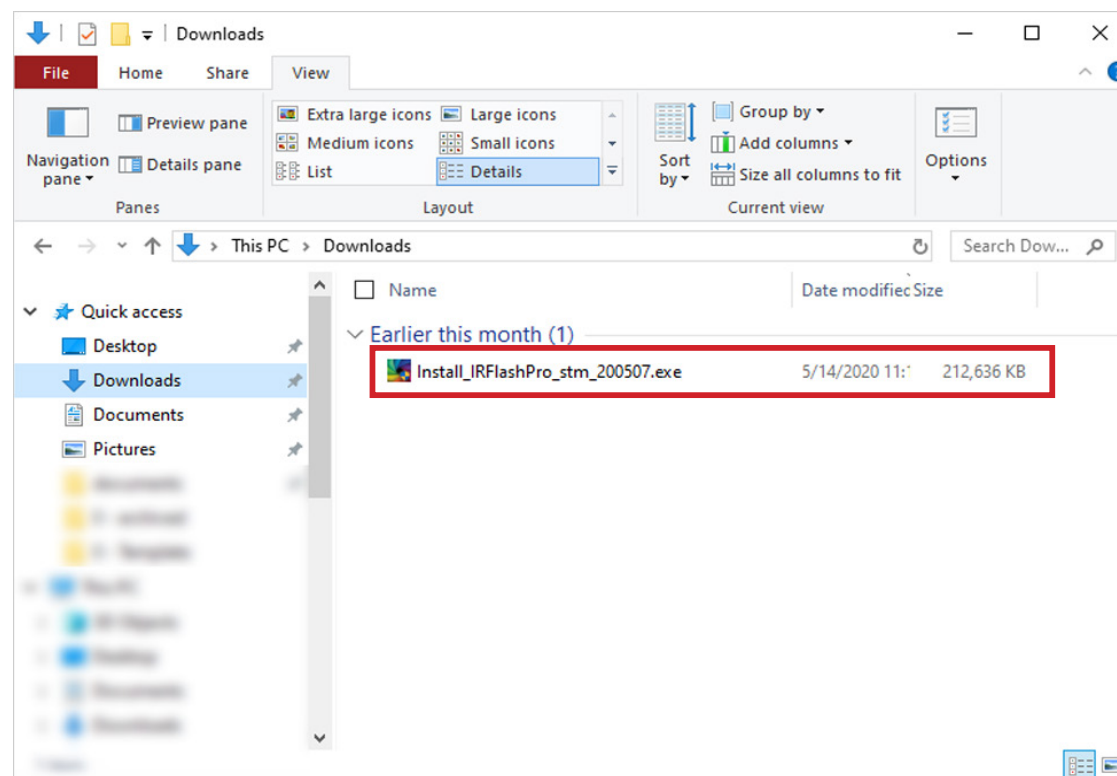
IN NO EVENT SHALL ICI BE LIABLE FOR ANY INDIRECT, SPECIAL, CONSEQUENTIAL, OR INCIDENTAL DAMAGES, INCLUDING, WITHOUT LIMITATION, LOST PROFITS OR LOSS OR DAMAGE TO DATA ARISING OUT OF THE USE OR INABILITY TO USE THIS MANUAL, EVEN IF ICI HAS BEEN ADVISED OF THE POSSIBILITY OF SUCH DAMAGES.

Rev History:
- Created April 2020

Installation

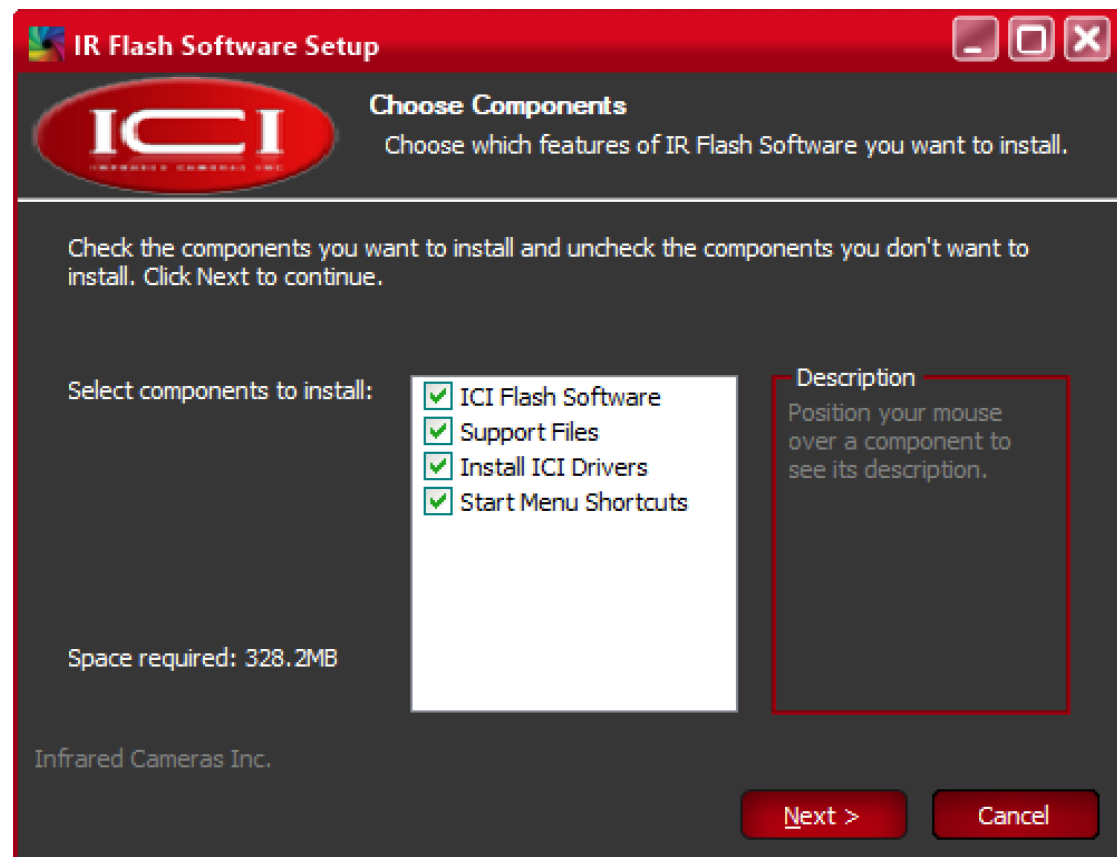
1.

Launch .exe by double-clicking file.



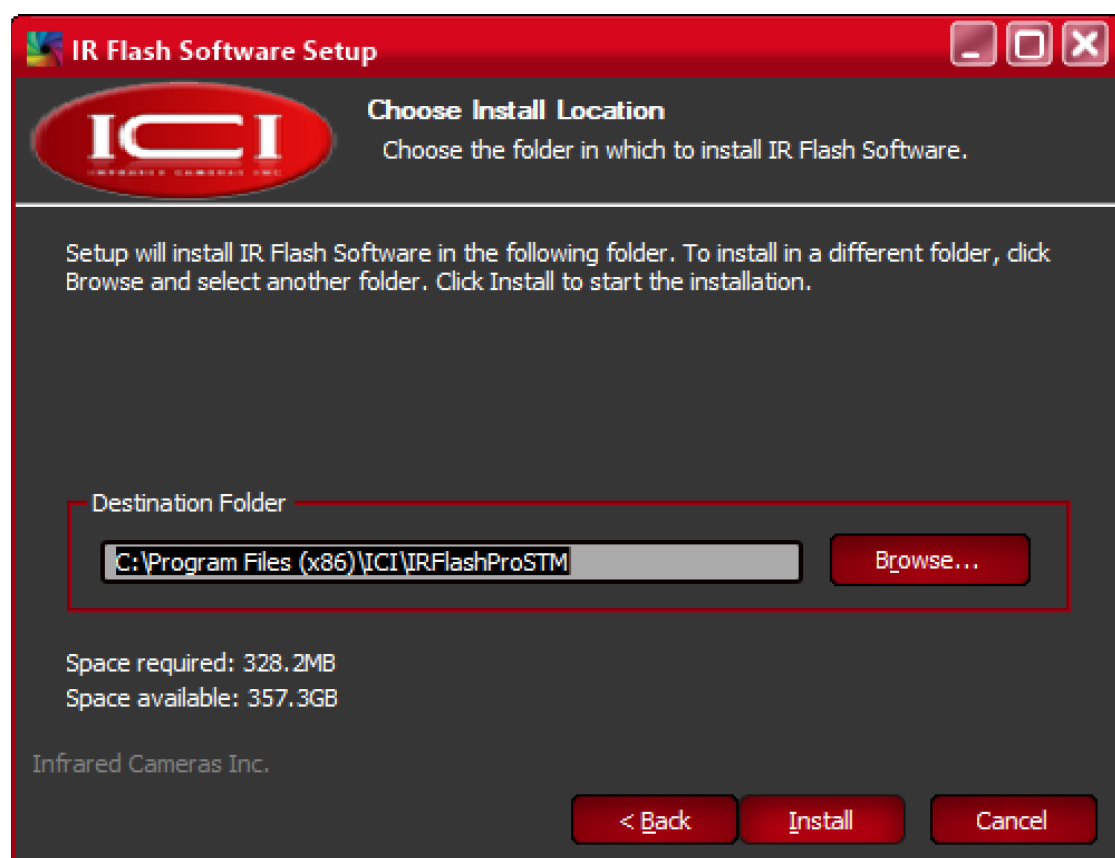
2.

Choose Components.
Click Next.



3.

Optionally change installation location by clicking Browse. Click Install.



4.

Grant system permission.
Click Yes.

User Account Control

Do you want to allow this app to make
changes to your device?



IRFlashPro

Verified publisher: Infrared Cameras Inc
File origin: Hard drive on this computer

[Show more details](#)

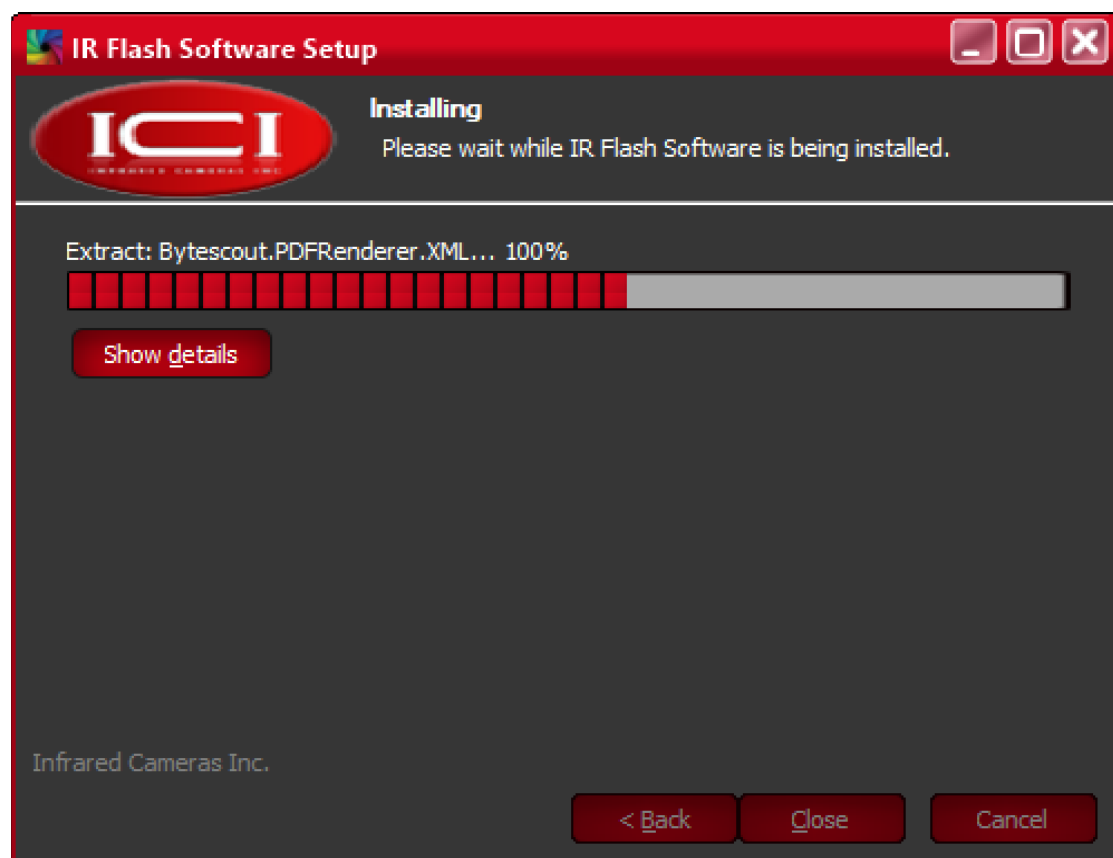
Yes

No



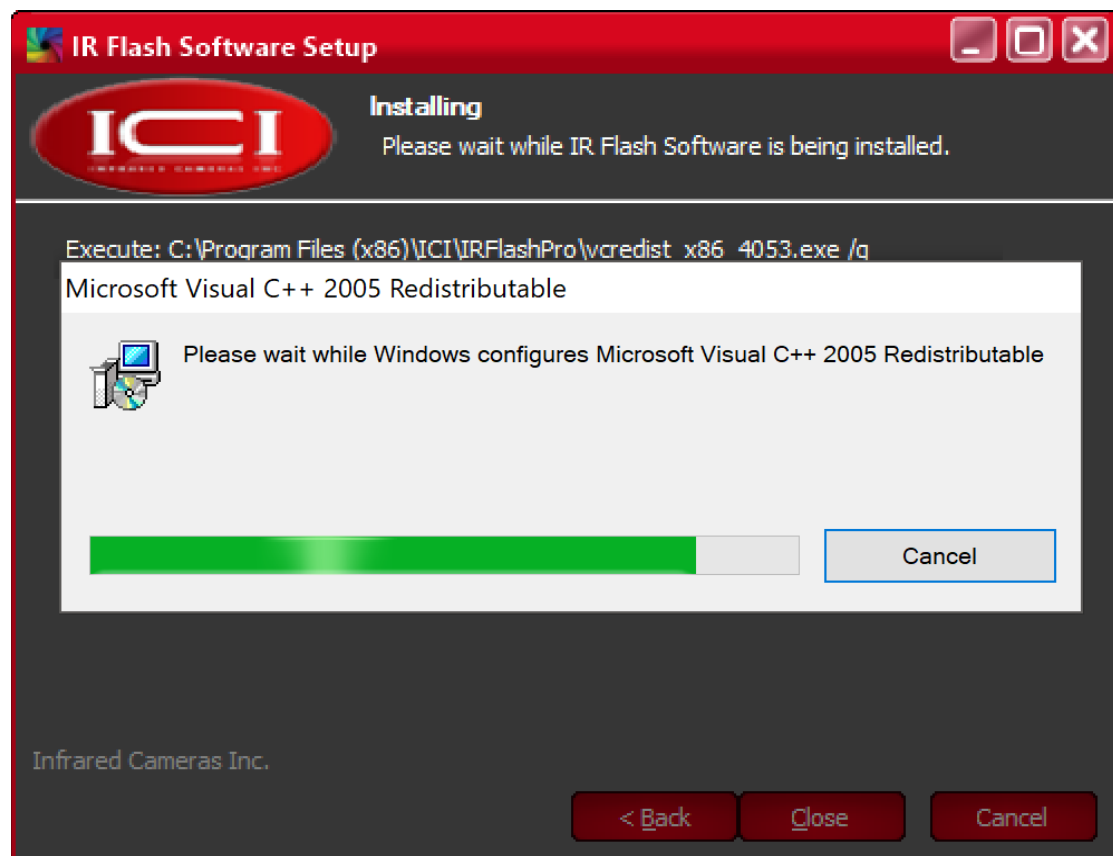
5.

Please wait while IR Flash software installs.
Pop-ups will occur. Do not close or cancel.



6.

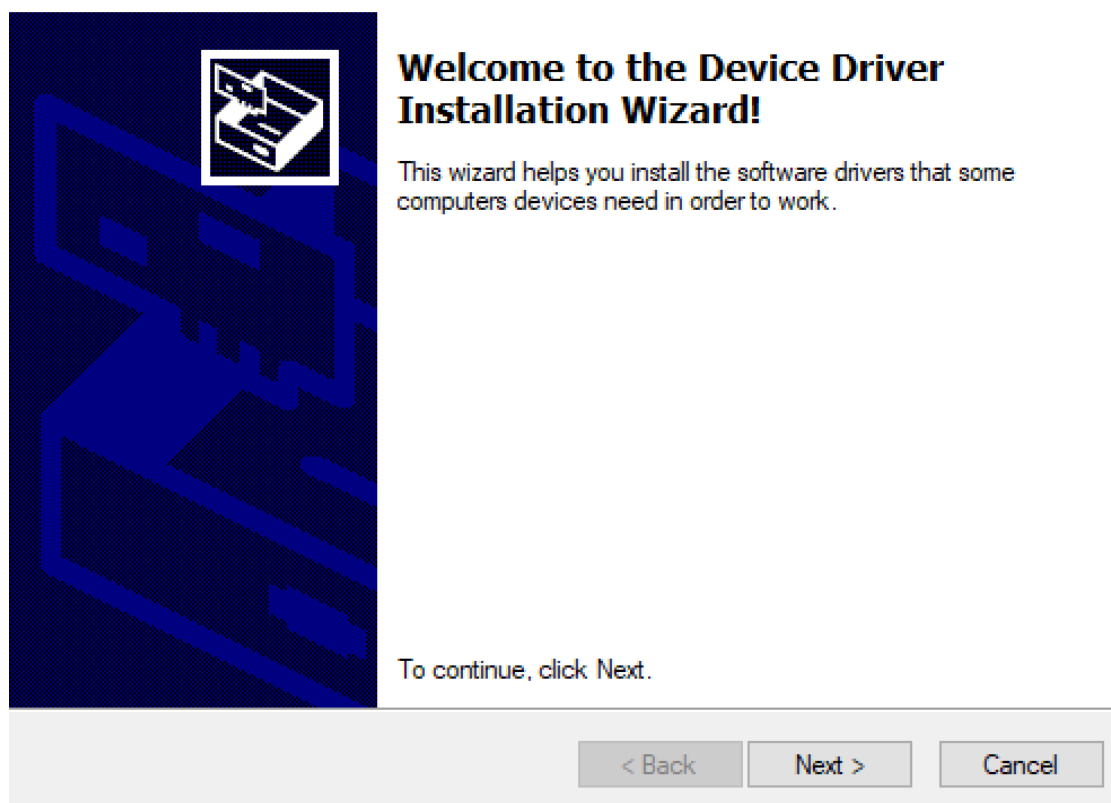
Please wait while C++ configures. Pop-ups will occur. Do not close or cancel Redistributables.



7.

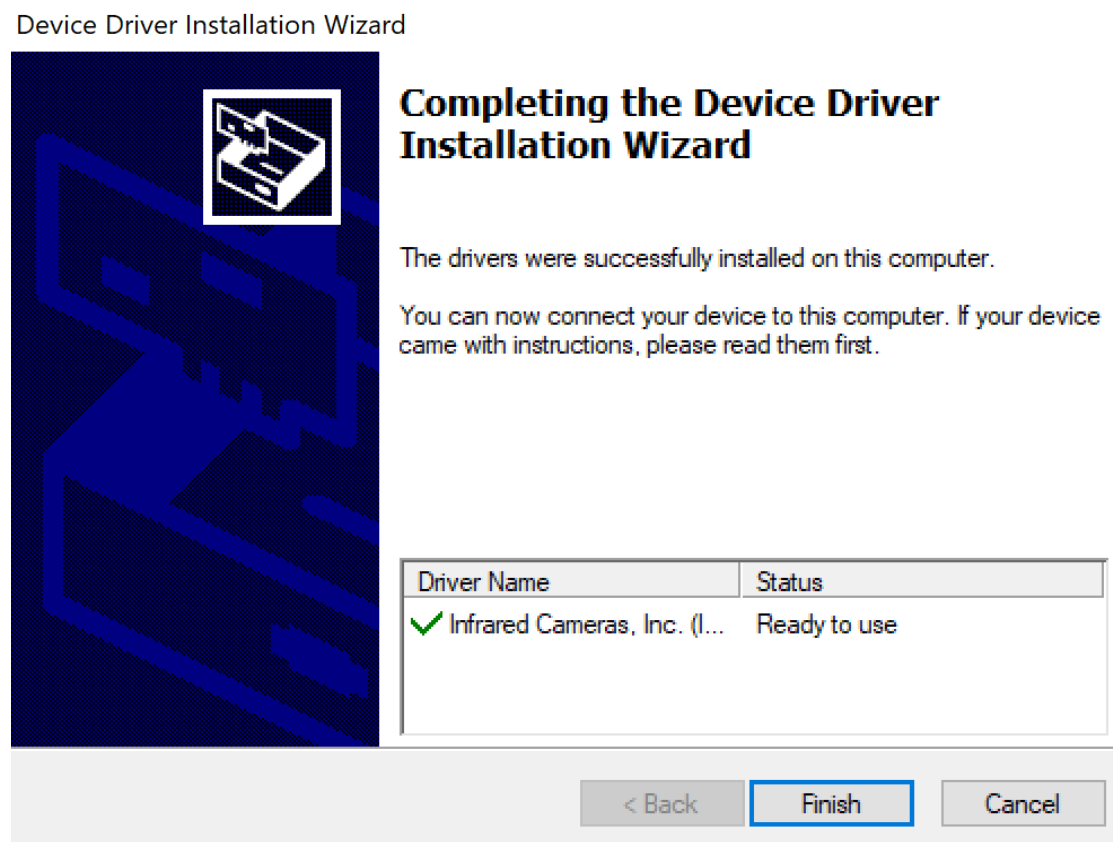
Device Driver Installation Wizard will open. To continue with installation, click Next.

Device Driver Installation Wizard



8.

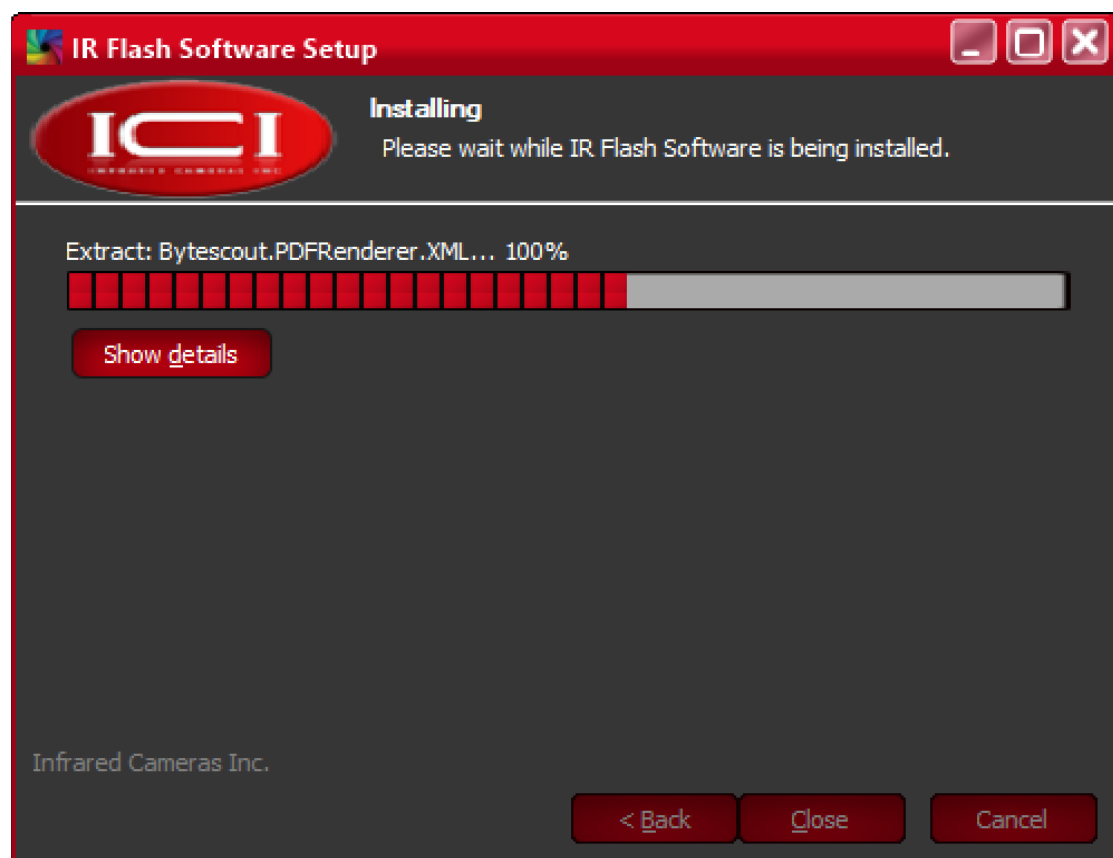
Click Finish



NOTE: More than one driver may need to be installed. Repeat steps 7 and 8 as required.

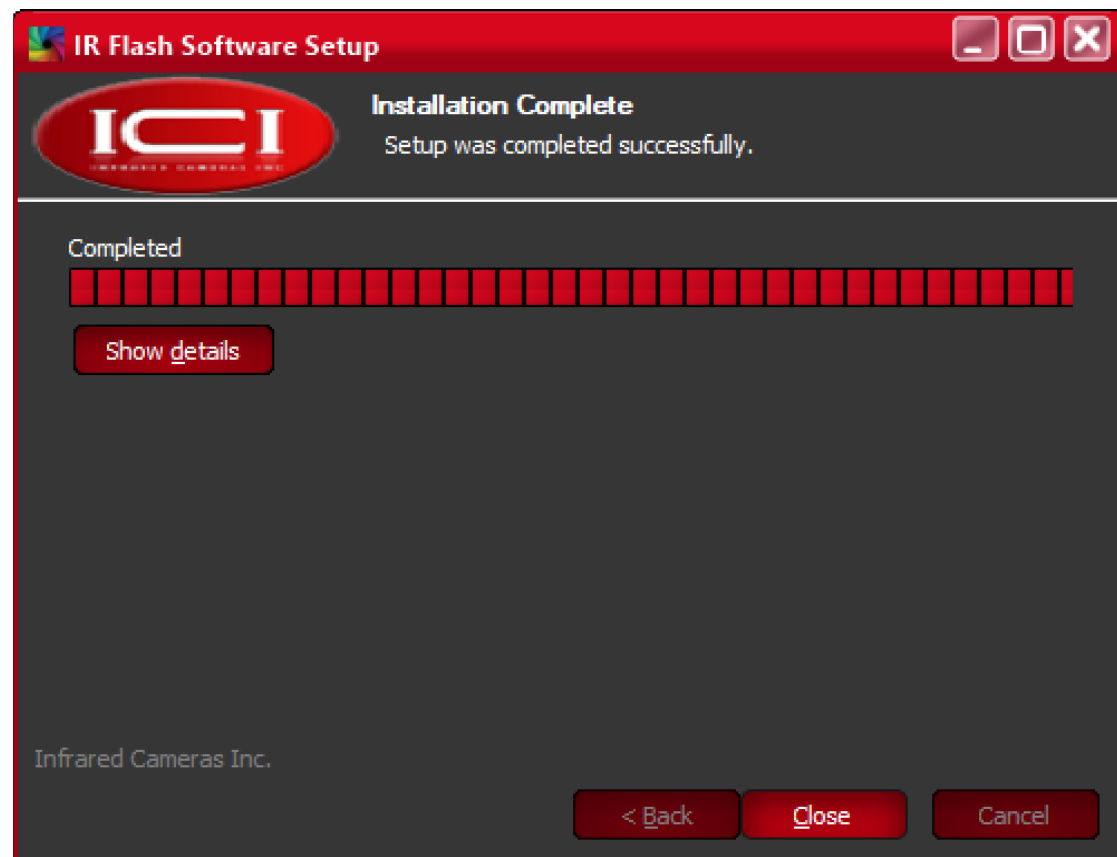
9.

Allow IR Flash software to finish installing.



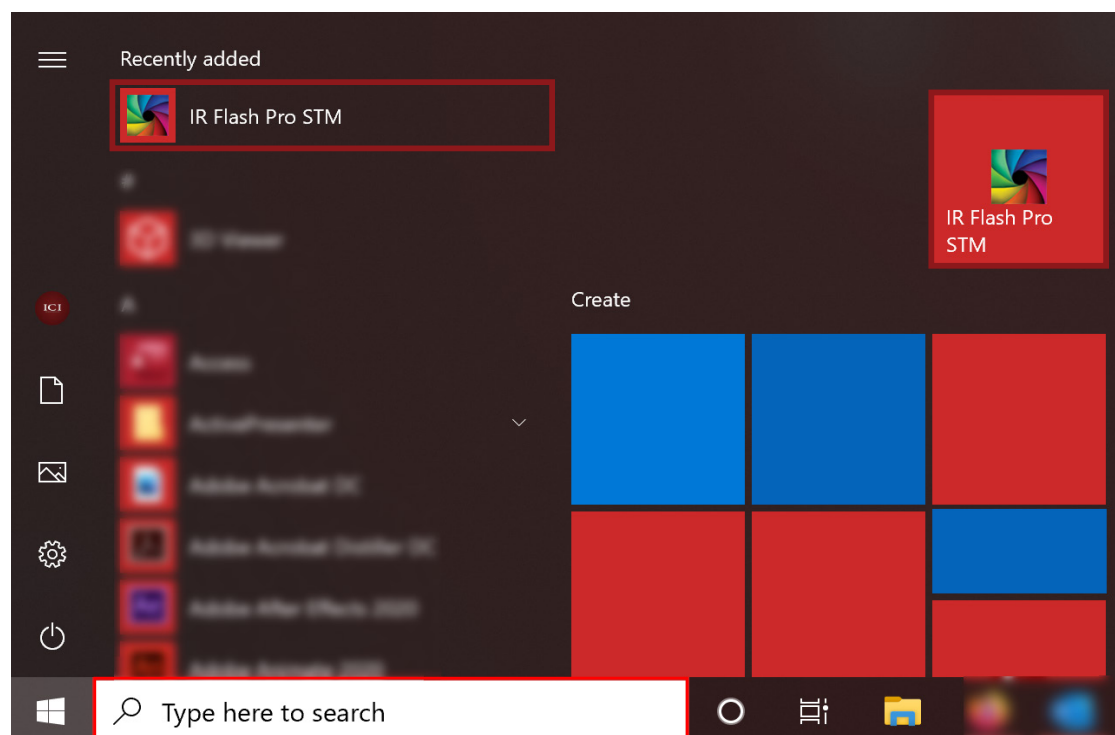
10.

Click Close.



11

Launch IR Flash Pro STM from the start menu.



CRITICAL INFORMATION

- Thermal technology should be used to measure only one subject's temperature at a time.
- Measurements should not be solely, or primarily, relied upon to diagnose or exclude a diagnosis of any disease.
- Elevated body temperature should be confirmed with secondary evaluation methods (e.g., an NCIT or clinical grade contact thermometer).
- Calibrate systems annually to maintain accurate device specifications.
- Make sure you have all system equipment and component items (refer to the **Package Includes** section on page 3).
- Ensure setup area has a stable ambient temperature between 20 °C and 24 °C.
- Select an appropriate area free of immediate airflow from doorways, as well as air conditioning/ventilation systems. Airflow can influence temperature readings.
- Select an appropriate area free of intense ambient heat from doorways/windows. Temperature fluctuations can influence temperature readings.
- Target area must have a non-reflective background.
- When fully assembled, make sure the system does not block the direct path of person(s) to be imaged. This ensures it will not be moved or knocked down. Using a dividing barrier will help keep tripods separate from the path.
- The temperature reference source (used for thermal drift compensation) is important in obtaining an accurate temperature assessment.
- Allow at least 45 minutes for the temperature reference source to warm up. This will provide the most accurate skin temperature measurements.
- Make sure the temperature reference source is positioned off center to keep the person being imaged as centered as possible.
- Read the current government regulations regarding skin temperature measurements. Additional information on these devices can be found by reading **IEC 80601-2-59: Medical electrical equipment - Part 2-59** and **ISO/TR 13154: Medical electrical equipment**.
- Recommended system requirements for software:

Processor: i5 or above
RAM: 4 GB or above
OS: Windows 8/8.1/10
Hard Drive: 256 GB or above
Display Resolution: 1920×1080

ABOUT ICI / CONTACT

INFRARED CAMERAS INC.
2105 W. Cardinal Dr.
Beaumont, TX 77705

Phone: (409) 861-0788 | Toll Free: (866) 861-0788 | International: (409) 861-0788

General Inquiry: support@infraredcameras.com
Website: www.infraredcameras.com

You may reach a representative by phone or email Mon – Fri 8:00AM - 5:00PM CST.

ICI manufactures complete systems and software. We can provide complete engineering, software, and OEM solutions. Our Fortune 500 clients rely on us for infrared equipment and thermography training (which we offer through the Infrared Training Institute).

In addition to providing custom germanium, silica, and sapphire optics, we also build windows for enclosures, as well as custom pan and tilt units. We can even provide customizable explosion proof systems.

Our knowledge and experience stems from years of using infrared imaging and temperature measurement instruments to provide solutions to: managers, engineers, scientists, inspectors and operators in space, power companies, medical, pulp and paper, food industry, research and development, and various process industries. You can see our products and services used in industrial, commercial, and government applications worldwide. Additionally, our ICI 7320 was awarded “Product of the Month” by NASA*. Originally named Texas Infrared (still DBA), Infrared Cameras Inc. has been in business since March, 1995.

Thank you for your dedicated and continued support.